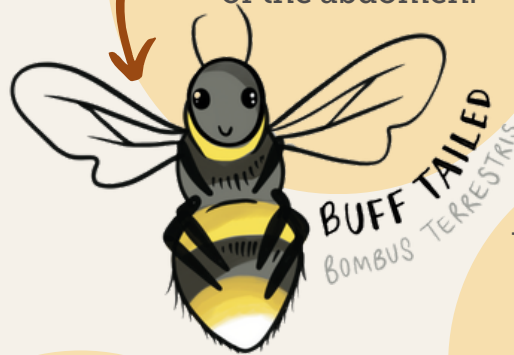


A guide to British bees

Did you know that there are over 250 species of bee in the UK? Use this bee-spotting guide to identify which ones are buzzing around in your garden, local park, or allotment.



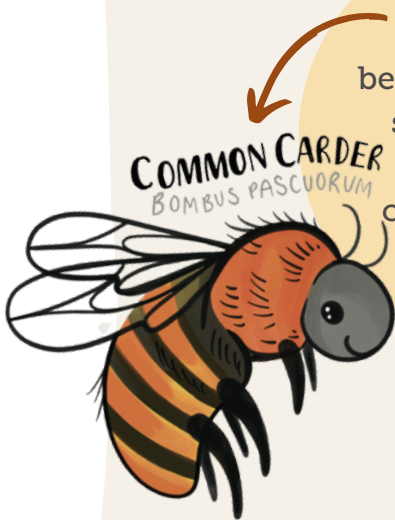
Slim, sandy thorax and black abdomen with golden-amber bands.



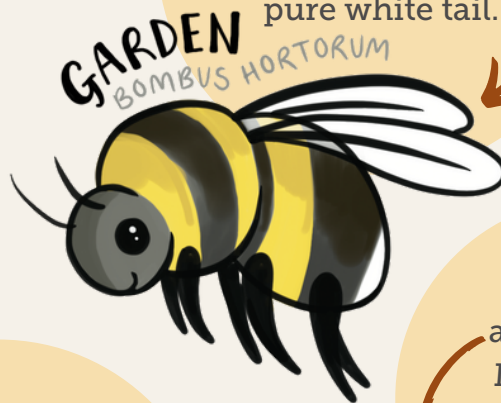
Large species with dark yellow bands at the front of the thorax and middle of the abdomen.



Identified by their ginger thorax, black abdomen and white tail.



These big fluffy bees are the only UK species with all-brown (ginger) colouring and no white tail.



Yellow-black-yellow thorax, a yellow band at the base of the abdomen, and a pure white tail.



Black with yellowish legs. Males are brown with a pale face and hair plumes on their middle legs.



Yellow spots along abdomen. Males also have prongs on their rear.



Want to learn how to help nature at home?
Scan this QR code to download our
nature-friendly gardening guide.